

# Probability: 0.33

# 1

## A one in three chance of staying together

---

February **16** th

... May **19** th 2019

Opening /

Friday February **15** th / 7 pm

---

**musée**  
**Nicéphore**  
**Niépcé**



A project by the Nicéphore Niépce museum  
and Pilotine Production

Exhibition curators:  
Floriane Doury (Pilotine Production)  
Anne-Céline Borey  
and Emmanuelle Vieillard  
(Nicéphore Niépce museum)

The museum would like to thank the artists,  
their gallerists, and Canson for its support.

### **Love...**

Love: [noun]

An interest, very enthusiastic preference of a person for a category of things, for a source of pleasure or satisfaction. Passionate and/ or sexual inclination of one person toward another. If we go by this extract from the definition in the dictionary, the term love can cover a broad range of feelings from romanticism to passionate desire, from filial love to spiritual devotion. In French, the verb to love, aimer, has multiple meanings.

In art history, love affairs are constantly celebrated. A winged, young adolescent, a stolen kiss, lovers damned for eternity... From love at first sight to the pleasures of the flesh, to the disappearance of feelings, all of the stages of love have inspired literature and art.

### **Love and Photography**

Through the photographic collections of the musée Nicéphore Niépce in Chalon-sur-Saône and the perspective of contemporary photographers, this show will provide the public with an eclectic take on love through the medium of photography. The exhibition "Probability: 0.33" – A one in three chance of staying together – is designed as a confrontation between everyday photography and the work of contemporary photographers.

The life cycle of every love story is punctuated by both amateur and professional photography. At the start of the 20th century, romantic pictures on postcards were used by couples writing to each other at the start of their relationships. Today, the photo posted on a dating website is the main criterion for choosing a potential partner. In the life of a couple, the biggest photographic event is the wedding. The story of the day is told in pictures by a professional photographer who is hired to chronicle this major social occasion. The printed photographs are then kept in an album to be flicked through or framed to decorate the family home. The photographs contribute to making the union real.

The exhibition also includes more unusual items such as the album made by a lover, entirely dedicated to the subject of his desire and inspired by literature and poetry. Or the collection of post-separation, mutilated family photographs where the father's face is carefully cut out of all the pictures.

Mac Adams, Delphine Balley, François Burgun, Natasha Caruana, Olivier Culmann, Anouck Durand, Romain Mader, Virginie Marnat, Denis Roche, Jenny Rova, Thomas Sauvin [Beijing Silvermine], Manon Weiser, and the humanist photographers approach the subjects of love and living together as a couple. We get to see their vision of the stages of a love affair with an uncertain ending.

---

Lovers, joined in abandonment in public, become the very archetype of “lovers” in work by Doisneau and Ronis. Some love-struck photographers put their own relationships at the core of their work. They make their partner or their love story the central subject of their work. Others absorb the codes, customs and rites of love and propose an off-kilter, even corrosive take on coupledness, miles from the clichés of love with a capital L.

Lists of the pieces on show:

**In introduction, the love celebrated  
by Doisneau, Ronis, Brassai, Izis, Capa...**

**Chapter 1 : Somebody to love**

*Rechercher et rencontrer l'âme sœur*

**Postcards**

early 20th century

Collection of the musée Nicéphore Niépce

**BIEM éditions**

**Postcards records**

1960s

Collection of the musée Nicéphore Niépce

**Manon Weiser**

**Tinder Man,**

**the greatest hero of them all**

2014

Courtesy of the artist

**Chapter 2 : Let's stay together**

*Moi, je te prends toi...*

**Virginie Marnat**

**Cocottes**

2002

Collection of the musée Nicéphore Niépce

**Various studios**

**Wedding portraits**

1900 to 2000

Collection of the musée Nicéphore Niépce

---

**Thomas Sauvin**  
**[Beijing Silvermine]**  
**Until Death Do Us Part**  
2015  
Courtesy of the artist

**Chapter 3 : Somewhere only we know**

*Ma vie de couple*

**Anouck Durand**  
**How I left**  
2012  
Courtesy of the artist

**Jenny Rova**  
**Älskling,**  
**A self-portrait through the eyes of my lovers**  
2017  
Courtesy of the artist

**Denis Roche**  
**Proof of time** (extracts)  
1970s to 2000s  
Prints made in the laboratory  
of the musée Nicéphore Niépce in 2000  
Collection of the musée Nicéphore Niépce

**Anonymous amateur**  
**The album of Robert and Andrée**  
1960s  
Collection of the musée Nicéphore Niépce

**Mac Adams**  
**The liminal body,**  
**The threshold between remembering and forgetting**  
2018  
A first-time installation using extracts  
from the Robert and Andrée album  
Courtesy of the artist

---

**Chapter 4 : Jealous guy**

*Amour vache et rupture*

**Natasha Caruana**

**Divorce Index**

video HD, 5.21 minutes

2017

**Curtain of Broken Dreams**

2017

Courtesy of the artist

This piece was originally commissioned by the Open Data Institute as part of the Data as Culture programme, supported by the National Lottery and the Arts Council England.

**Olivier Culmann**

**Relics, Antoine's love life**

2002

Courtesy of the artist

**Amateur anonyme**

**Missing heads**

1950s

Collection of the musée Nicéphore Niépce

**Jenny Rova**

**I would also like to be – a work on jealousy**

2015

Collection of the musée Nicéphore Niépce

**François Burgun**

**Cakes**

2010

Collection of the musée Nicéphore Niépce

**Chapter 5 : Nothing else matter**

*À la vie, à l'amour, à la mort*

**Natasha Caruana**

**Love Bomb**

2014

Courtesy of the artist

---

**Photo-montages for the newspaper**

**Le Petit Parisien**

1920s - 1930s

Collection of the musée Nicéphore Niépce

**Delphine Balley**

**True Stories**

2006

Courtesy of the artist

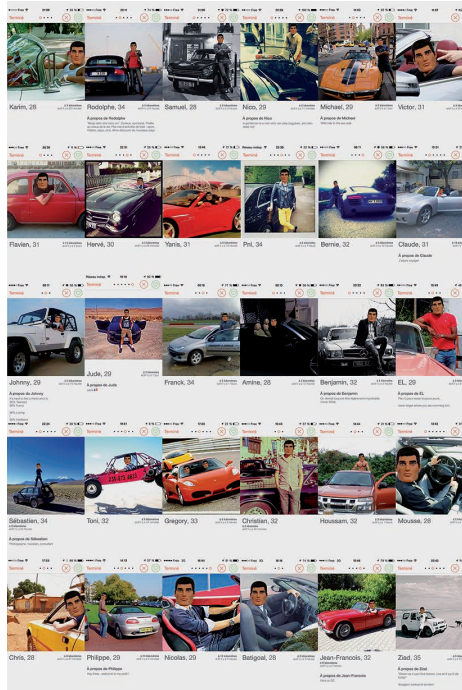
1 / Iris Éditions, Legrand Phot.  
 Postcard  
 circa 1910  
 Collection of the musée Nicéphore Niépce  
 © musée Nicéphore Niépce

2 / Manon Weiser  
 Tinder Man,  
 the greatest hero of them all  
 2014  
 © Manon Weiser



Les roses nous sourient dans les buissons en fleurs,  
 N'est ce pas le moment de réunir nos cœurs?

1



2

**3 / Anonymous**

Commissioned wedding portrait

early 20th century

Collection of the musée Nicéphore Niépce

© musée Nicéphore Niépce

**4 / Anonymous**

Italian wedding album

1970s

Collection of the musée Nicéphore Niépce

© musée Nicéphore Niépce

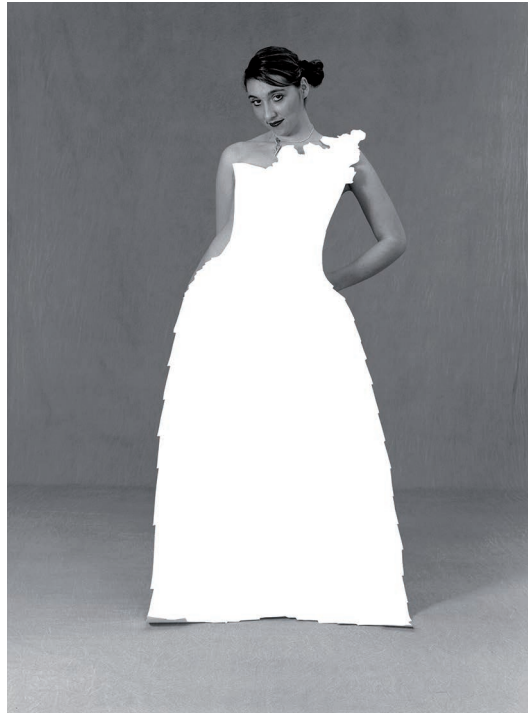


3



4

**5** / Virginie Marnat  
Cocotte  
2002  
Collection of the musée Nicéphore Niépce  
© Virginie Marnat



5

**6** / Thomas Sauvin,  
[Beijing Silvermine]  
Until Death Do Us Part  
2015  
© Thomas Sauvin



6

**7 / Anonyme**  
Family photographs  
1930s  
Collection of the musée Nicéphore Niépce  
© musée Nicéphore Niépce



7

**8 / Jenny Rova**  
I Would Also Like to Be  
2013  
© Jenny Rova



8

**9 / François Burgun**

Cakes

2010

Collection of the musée Nicéphore Niépce

© François Burgun

**10 / Anonymous**

Le Petit Parisien archive

Collection of the musée Nicéphore Niépce

© musée Nicéphore Niépce



9



10

**Musée Nicéphore Niépce**

28 quai des messageries  
71100 Chalon-sur-Saône  
+33 [0]3 85 48 41 98  
+33 [0]3 85 48 63 20 / fax  
[contact@museeniepce.com](mailto:contact@museeniepce.com)

[www.museeniepce.com](http://www.museeniepce.com)  
[www.open-museeniepce.com](http://www.open-museeniepce.com)  
[www.archivesniepce.com](http://www.archivesniepce.com)

**Press**

Emmanuelle Vieillard  
[communication.niepce@chalonsursaone.fr](mailto:communication.niepce@chalonsursaone.fr)

**Open**

every day  
except Tuesdays and holidays,  
9.30 ... 11.45 am  
and 2.00 ... 5.45 pm

**Free entrance**

We would like to thank:  
Friends of the Nicéphore  
Niépce museum  
– Our patrons  
Maison Veuve Ambal  
L'office Notarial Camuset  
et Gacon-Cartier  
Canson  
– Our local partners  
Cabinet BW Conseil  
Le Comptoir des fers  
Le temps apprivoisé

Keep up to date  
with the musée Nicéphore Niépce  
on Facebook  
or follow us  
on Twitter : @musee\_Niepce  
on Instagram : @museeniephoreniepce

**Access**

By the A6,  
exit 25 Chalon Nord  
or 26 Chalon Sud  
SNCF train station in Chalon  
Close to the TGV station  
Le Creusot-Montchanin  
[20 min. from Chalon by car]  
Lyon-Saint-Exupéry Airport  
[an hour from Chalon by car]

*Patrimoine*

